

Introduction to Virtual Reality Part II

Alberto Borghese
Applied Intelligent Systems Laboratory (AIS-Lab)
Department of Computer Science
University of Milano



1/86

<http://borghese.di.unimi.it/>



Content



- Introduction
- Input Systems
- **Virtual Reality Engine**
- World Generators
- Output Systems
- Applications

A.A. 2023-2024

2/86

<http://borghese.di.unimi.it/>



Sensorial stimulation



Vision -> Graphical rendering

Audio -> Audio rendering

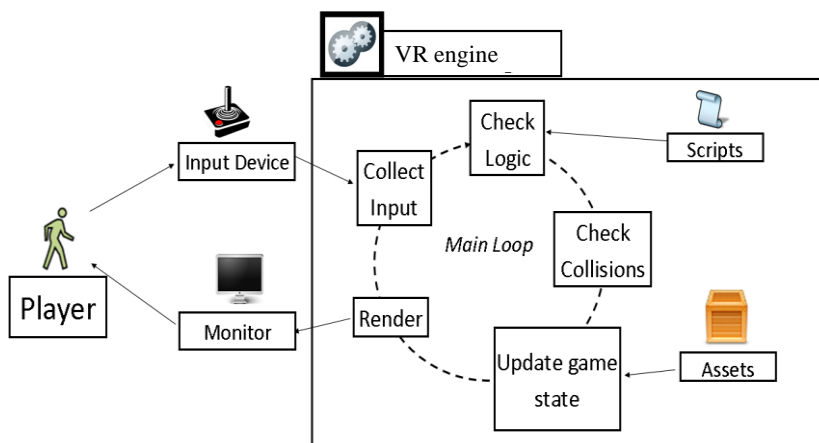
Proprioception -> Vibrators, gloves,...

Olfactory

....

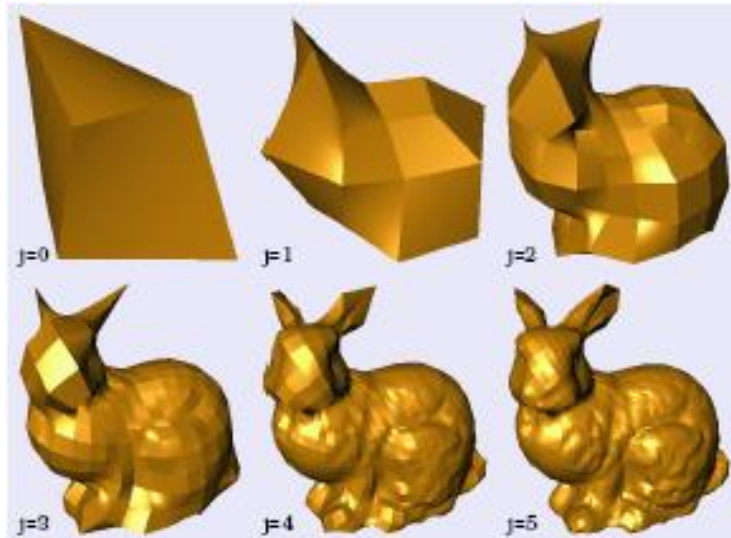


What is a VR engine?





LOD models



A.A. 2023-2024

7/86

<http://borghese.di.unimi.it/>

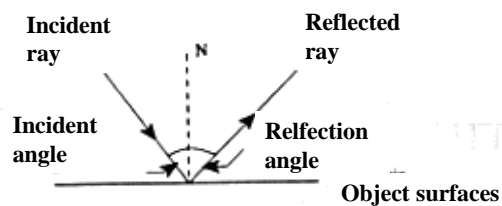


Rendering

Precompute that "renders", that is generates, an image starting from the Mathematical description of a 3D scene, through algorithms that define the color in each point of the digital image [Wikipedia].

Rendering is based on the physics of the (electromagnetic) waves that describes the interaction between the waves and the interacting mean, causing reflections, refraction, scattering, tunnelling effects...).

We see what is **sent back (reflected)** by the scene => The scene is lit by one or more lights (not light, no image), that is reflected by objects and hits the image plane.



A.A. 2023-2024

8/86

<http://borghese.di.unimi.it/>



The VR engine (visual computing)



Double buffering (for real-time visualization of 3D models) + rasterization.
Quad-buffering from VR.

Interpolation of normals direction among adjacent triangles (to create the appearance of a continuous curved surface)

Graphical pipelining (from 3D geometry to 2D images: projection, colour, texture, shadowing, ...).

Parallelization. GPU programming language (CUDA nVidia).

Hierarchy of structures (objects, collision detection...)

Multiple cache levels.

Look-ahead code optimization (compiler optimization).



Collision detection



Computational demanding ($O(n^2EF)$).

Use of multiresolution models.

Hierarchical detection.

- Geometry simplification (axes aligned faces).

- Check for common volumes.

- Extraction of the faces belonging to these volumes.

- Octree of the pairs of candidate faces.

- Check for intersection.

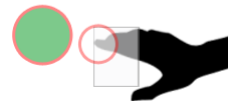


2D collision detection

- Collision detection with target can be checked by analyzing the overlapping between part of the motion mask only in particular regions.
- Identification of the motion mask as the outermost part of the body. Approximated collision detection defining general shapes.

Correct Hand collision area
(most left pixel in the area around first top most high pixel)

- Collision with targets gives hit, collision with distractors gives a miss.
- Same principles implemented with Sony EyeToy Webcam (2003).



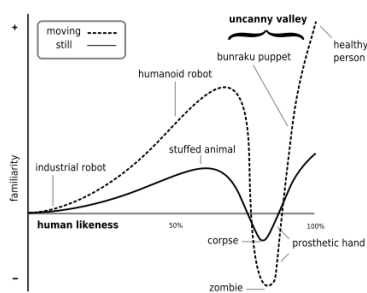
A.A. 2023-2024

11/86

di.unimi.it



Avatar designed avoiding the "uncanny" valley



Mori, Masahiro (1970). Bukimi no tani The uncanny valley (K. F. MacDorman & T. Minato, Trans.). Energy, 7(4), 33-35. (Originally in Japanese)



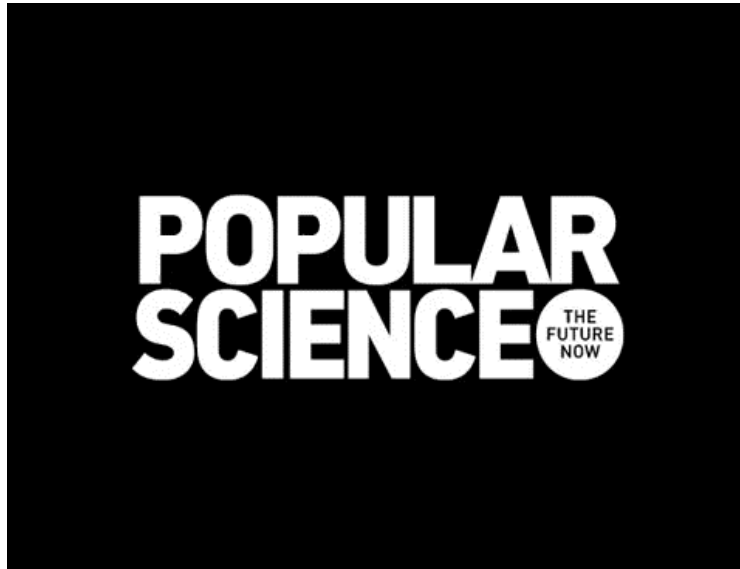
A.A. 2023-2024

12/86

http://borghese.di.unimi.it



Uncanny Valley



Content



- Introduction
- Input Systems
- Virtual reality Engine
- **World Generators**
- Output Systems
- Applications



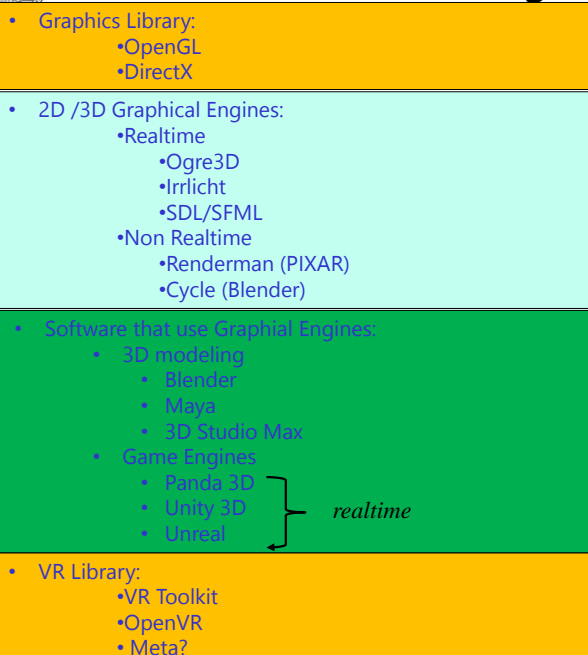
3D Assets making



- Scanners 3D (copying from reality)
 - Active (laser or unstructured light, sound)
 - Passive (video - SLAM)
- Modelling
 - Organic
 - Non organic
- Procedural content generation



VR related engines



Low level



High Level

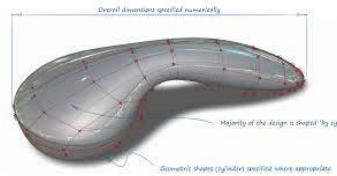
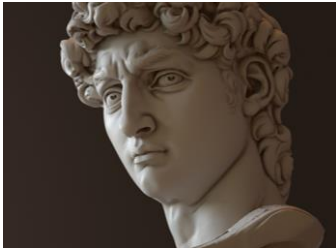


CAD systems

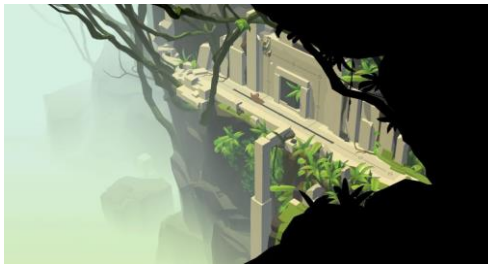


Softimage, Maya, Blender, Unity 3D, Unreal ...

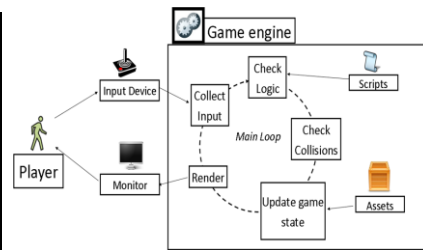
- Polygonal modelling
- Curved modelling (e.g. NURBS)
- Volumetric modelling (sculpting)



<http://unity3d.com>



Lara Croft go puzzle adventure

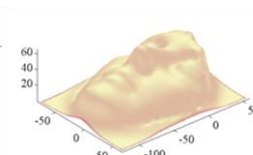


Rush game





3D Scanner: Autoscan - 1997



- Manual scanning through a laser pointer,
- Real-time display feed-back to guide scanning.
- Flexible set-up and portability
- Acquisition of laser spot in real-time at 100 Hz. (max 100 points / sec)
3D reconstruction of the spot through triangulation poses problems due to noise on the measurement of position on the cameras.

A.A. 2023-2024

19/86

<http://borghese.di.unimi.it/>



Models from range data



Cyberware whole body scanner, WB4



Which problems do you envisage?

A.A. 2023-2024

20/86

<http://borghese.di.unimi.it/>



Models from range data (II)



Cyberware smaller model
3030



A.A. 2023-2024

21/86

<http://borghese.di.unimi.it/>



Models from range data (IV)



Digibot II.
•Platform rotates
•Scanner line translates.



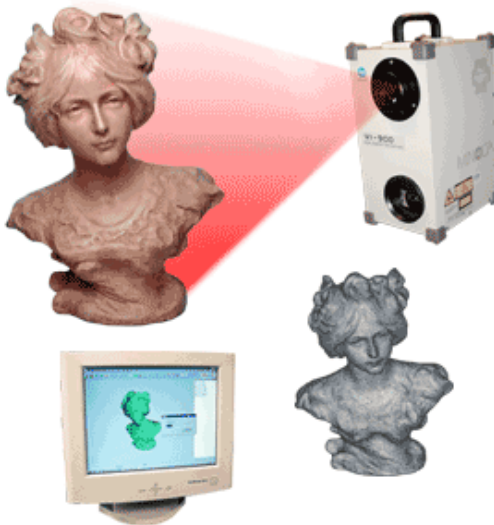
A.A. 2023-2024

22/86

<http://borghese.di.unimi.it/>



MINOLTA
Scanner Laser 3d



Minolta scanner 3D

https://www.konicaminolta.com/instruments/download/instruction_manual/3d/index.html

A.A. 2023-2024

23/86

<http://borghese.di.unimi.it/>



3D structure from range data (III)



Polhemus hand held laser scanner

A.A. 2023-2024

24/86

<http://borghese.di.unimi.it/>



From Clouds to surfaces



Effect of measurement noise is clear with Delaunay triangulation.
Need of filtering is evident.



3D structure from points

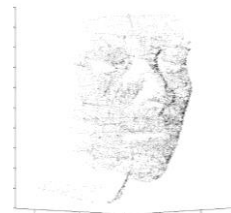


Linear approximation (mesh):

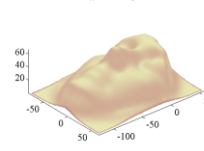
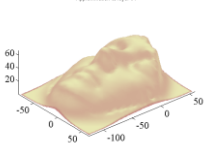
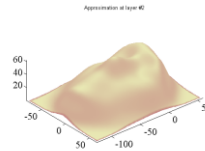
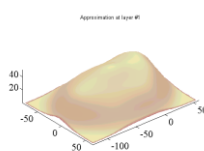
- Delaunay triangulation (Watson, 1981; Fang and Piegl, 1992). Direct tessellation (no filtering).
- Alpha shapes, Ball Pivoting (Bernardini et al., 2000), Power Crust (median axis transform, Amenta, 2002). Post processing to regularize a Delaunay tessellation.

Surface fitting to range data

- Snakes (Kass et al., 1988). Energy based approach. Best curves.
- Kohonen maps (1990).
- Radial Basis Functions Networks (Poggio and Girosi, 1995; Ferrari et al. 2005, semi-parametric models, incremental approach).
- Support Vector Regression (SVR, A.Smola and B.Scholkopf)

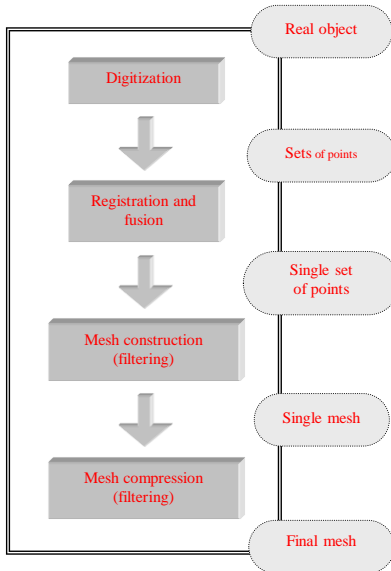


.....





Scanner 3D modern pipeline



M. Levoy, S. Rusinkiewicz, M. Ginzton, J. Ginsberg, K. Pulli, D. Koller, S. Anderson, J. Shade, B. Curless, L. Pereira, J. Davis and D. Fulk, "The Digital Michelangelo Project: 3D Scanning of Large Statues," *Proc. Siggraph'99*, ACM Press, pp. 121-132, 1999

A.A. 2023-2024

27/86

<http://borghese.di.unimi.it/>



Research challenges Digital Michelangelo project



- vision problems
 - aligning and merging scans
 - automatic hole filling
 - inverse color rendering
 - automated view planning
 - Interaction of laser with marble
- digital archiving problems
 - making the data last forever
 - robust 3D digital watermarking
 - indexing and searching 3D data
 - real-time viewing on low-cost PCs

A.A. 2023-2024

28/86

<http://borghese.di.unimi.it/>



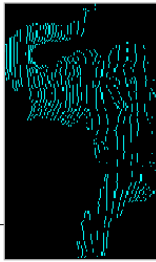
Video-based 3D scanner (Rusinkiewicz et al., 2002)



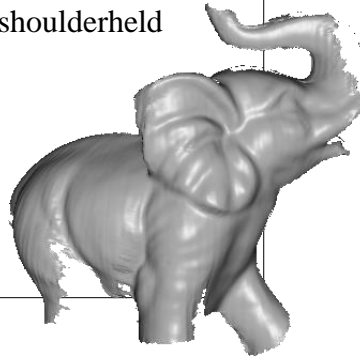
- A projector of stripes with pseudo-random width and a video camera
- holes can be found and filled on-the-fly
- object or scanner can be handheld / shoulderheld



video frame



range data



merged model
(159 frames)

A.A. 2023-2024

29/86

<http://borghese.di.unimi.it/>



Kinect fusion



Kinect Fusion Lets You Build 3D Models of Anything - Lettere multimediale VLC
Media Riproduzione Audio Video Sottotitolo Strumenti Visualizza Aiuto



Low cost 3D modeling

KinectFusion: Real-time 3D Reconstruction and Interaction

A.A. 2023-2024

Using a Moving Depth Camera, Izadi et al., Proc. Siggraph 2011

<http://borghese.di.unimi.it/>



3D modelling



Solid modeling

- 3D geometric solids: cubes, cylinders, cones...
- Revolution surfaces.
- Spline and NURBS (Piegle, 1993). CAD, high interactivity.
- Subdivision surfaces (Schroeder, 1999).
- Hierarchy of objects with heritage.

Rendering

- Colour and Texture
- lights => shadows.

Animation

- Motion (animation)
- Camera tracking (for augmented reality), transparencies....

Specialized systems: Finite element models

- It is a class per sé. Local modeling. Mechanical modeling.
- Largely used for animation in medicine (facial animation, deformation of tissue during surgery). Multi-layer modeling.
- Specialized SW are usually associated: Katia, AutoCAD...
- 3D Structure.

Specific CAD for mechanics: Katia, AutoCAD, Nastran SW => **Visual Computing**



Procedural Modelling



Models generated through a procedure (a software program, an algorithm)

It is possible to construct a 3D mesh specifying parametric rules to create the objects.

Examples: Trees, Cities, Mugs,



Artificial plants



A synthetic model of the topiary garden at Levens Hall, England, by

R. Mëch, P. Prusinkiewicz, and M. James. "Garden of L" (inset) by P. Prusinkiewicz,

F. Fracchia, J. Hanan, and D. Fowler; see www.cpsc.ucalgary.ca/~pwp

L-systems

<http://borghese.di.unimi.it/>



Realizing a plant



Lindenmayer example

variables : X F

constants : + - []

start : X

rules : $(X \rightarrow F - [[X] + X] + F [+FX] - X), (F \rightarrow FF)$

angle : 25°

Here, F means "draw forward", - means "turn left 25°", and + means "turn right 25°". X does not correspond to any drawing action and is used to control the evolution of the curve.

[corresponds to saving the current values for position and angle, which are restored when the corresponding] is executed.





Specific SW for terrain modelization (Terragen)



A.A. 2023-2024

35/86

<http://borghese.di.unimi.it/>



Artificial landscape



<http://planetside.co.uk/products/terragen3>



Video on Vajont history

A.A. 2023-2024

36/86

<http://borghese.di.unimi.it/>



Content



- Introduction
- Input Systems
- Virtual Reality Engine
- World Generators
- **Output Systems**
- Applications



Haptic displays



Convey to the subject the sensorial information generated in the interaction with the virtual objects: force, material texture...

Measure the force exerted by the subject on the virtual environment.

Haptic displays provide a mechanical interface for Virtual Reality applications.

Most important developments have been made in the robotics field.

International Haptic society - <http://www.isfh.org/>



Direct drive manipulandum (phantom)



Geomagic® Phantom® Premium
(ex Sensable Techn. 1993-2012) Now 3D Systems
A similar device (Falcon) is available and used in our lab for rehabilitation



Haptics low cost



Omni Phantom



Novint Falcon

Experience in the lab



Requirements of Haptic displays



- Large bandwidth.
- Low inertial and viscosity.

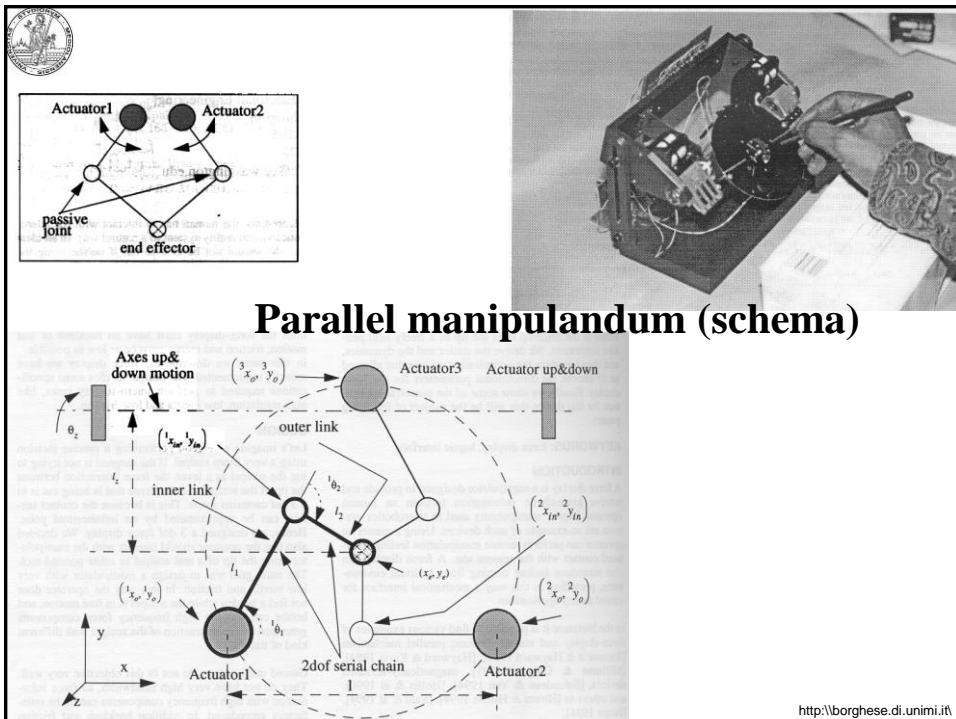
Technological solutions (oggetto intermediario):

- Direct drive manipulandum (Yoshikawa, 1990), Phantom (2000).
- Parallel manipulandum (Millman and Colgate, 1991; Buttolo and Hannaford, 1995).
- Magnetic levitation devices (Salcudean and Yan, 1994; Gomi and Kawato, 1996).
- Gloves and esoskeleta (Bergamasco, 1993, MITmanus, 2000, Braccio di ferro, 2007).

A.A. 2023-2024

41/86

<http://borghese.di.unimi.it/>





MIT-Manus, 2004



Braccio di ferro, 2010



Support for the fore-arm, and generation of a force field.

A.A. 2023-2024

43/86

<http://borghese.di.unimi.it/>



Gloves (Blackfinger, 2000)



A.A. 2023-2024

44/86

<http://borghese.di.unimi.it/>



Percro glove (2002)



Sensori goniometrici – non devono essere calibrati sulla lunghezza delle falangi.

<http://www.percro.org>

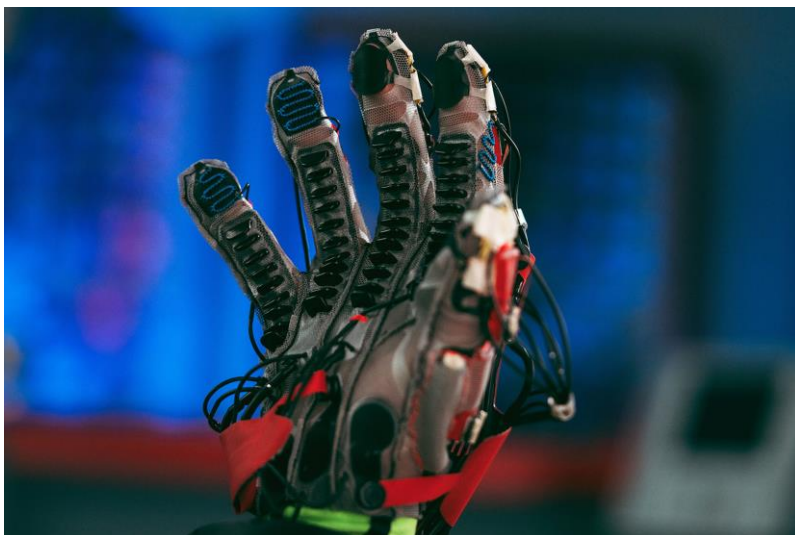
A.A. 2023-2024

45/86

<http://borghese.di.unimi.it/>



Meta hand from Meta VR labs



A.A. 2023-2024

46/86

<http://borghese.di.unimi.it/>



Tactile Stimulators

Cyber touch:

- 6 vibrators, 1 for each finger + 1 on palm
- Vibration frequency: 0-125 Hz.
- Vibration amplitude: 1.2 N @ 125 Hz (max).

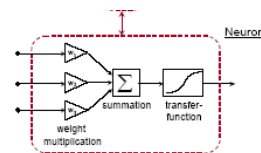
Iwamoto & Shinoda
University of Tokio



Other output devices

Audio – Stereo, sound spatialization.

Olfactory – Virtual nose



Type	Sensitive material	Detection principle
semiconducting metal oxides (M.O.S., Taguchi)	doped semiconducting metal oxides (SnO ₂ , GaO)	resistance change
quartz crystal microbalance, QMB	organic or inorganic layers (gas chromatography)	frequency change due to mass change
surface acoustic wave, SAW		
conducting polymers	modified conducting polymers	resistance change
catalytic field-effect sensors (MOSFET)	catalytic metals	workfunction change
pellistor	catalysts	temperature change due to chemical reactions
fluorescence sensors	organic dyes	light intensity changes
electrochemical cells	solid or liquid electrolytes	current or voltage change
infra red sensors	-	IR absorption



The future?



Impacto
Simulating Physical Impact by Combining
Tactile with Electrical Muscle Stimulation

Pedro Lopes, Alexandra Ion, and Patrick Baudisch

A.A. 2023-2024

49/86

<http://borghese.di.unimi.it/>



Sistemi di Output::visione



A.A. 2023-2024

<http://borghese.di.unimi.it/>



Optical Output systems



Requirements for the monitor:

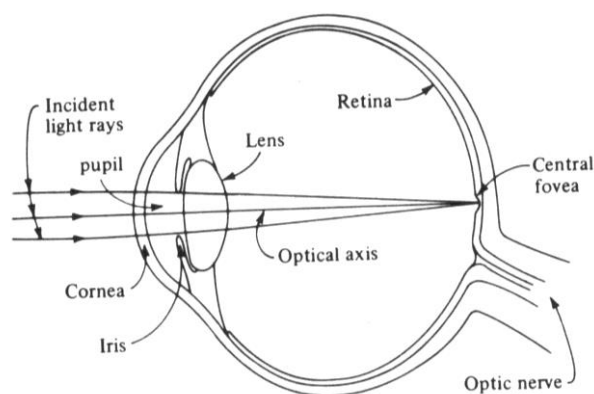
- Large field of view ($180^\circ \times 150^\circ$).
- High spatial resolution (35 pixels/degree, equivalent to 12,000x12,000 pixels for a 19" display positioned at 70cm from the viewer).

Requirements for the world generator:

- Stereoscopic vision for objects with $D < 10m$.
- Monocular cues for objects with $D > 10m$.
 - - Occlusions.
 - - Geometrical perspective and a-priori model knowledge.
 - - Shading.
 - - Motion.



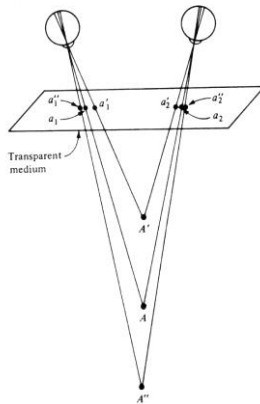
Human eye



Its behavior is very similar to that of a camera
Lens focuses the image, vergence movement orients the eye.



Vergence (stereo-disparity)



Points further away are projected on points closer to the image center.

The sum of these distances is called stereo-disparity and depends on distance.

Stereo-images should have this disparity.

Vergence and focusing are strictly connected.

Also monocular cues: shading, apparent size,



VR sickness



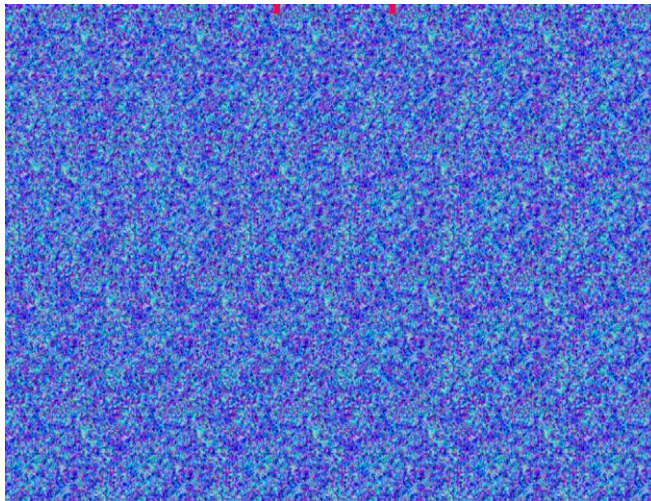
La dissonanza tra la percezione di movimento tra vari organi del nostro corpo, i quali mandano segnali contrastanti al nostro cervello che di conseguenza «va in confusione» e entra in modalità di protezione.

Conflitti sensoriali:

- Vergenza e messa a fuoco
- Movimento apparente dato dalla vista e assenza di movimento reale, determinato dall'apparato vestibolare e somatosensoriale.
 - **L'apparato vestibolare**, che tramite gli organi del Golgi determina l'accelerazione angolare (rotazione) della nostra testa nello spazio.
 - **La vista**, che elabora il movimento degli oggetti esterni rispetto al nostro corpo.
 - **L'apparato somatosensoriale** che tramite muscoli, pelle, tendini e articolazioni riceve informazioni sul movimento del corpo nello spazio.



Autostereogram



To see the 3D image, you need to relax and to try to view "through" the image (focusing at infinity – rettile preistorico volante)

A.A. 2023-2024

55/86

<http://borghese.di.unimi.it/>



Passive stereo



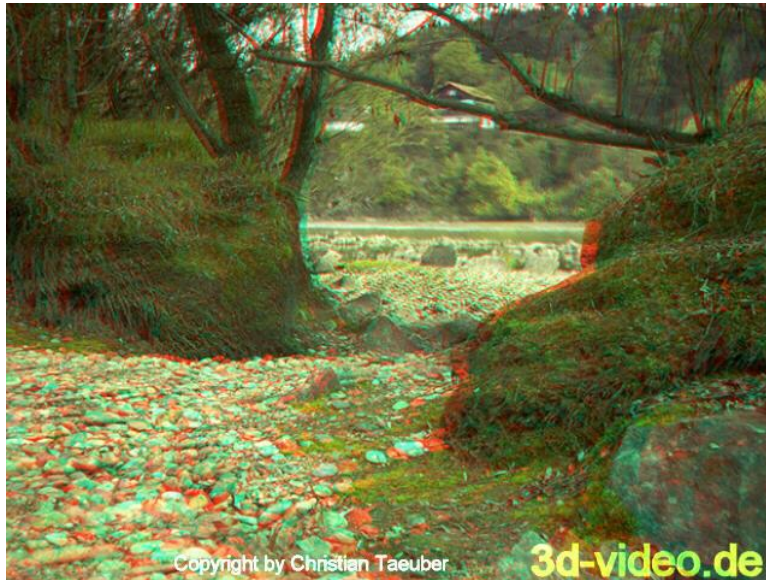
A.A. 2023-2024

56/86

<http://borghese.di.unimi.it/>



Stereo image for passive stereo



Copyright by Christian Taeuber

3d-video.de

A.A. 2023-2024

57/86

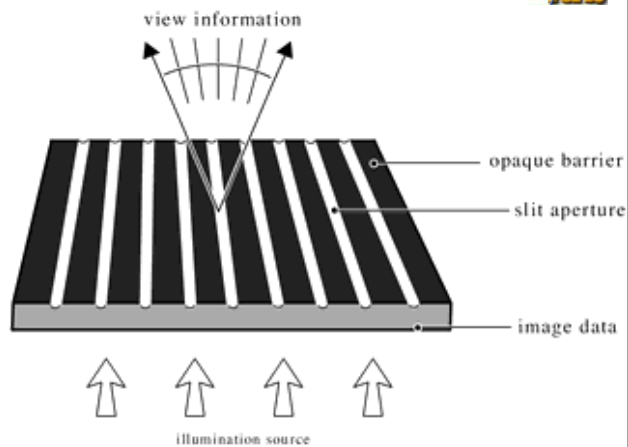
<http://borghese.di.unimi.it/>



Stereogram through parallax



Patent of 1903



The image is subdivided into vertical stripes.

Pairs of stripes congruent with a given angle of view are positioned in the proper columns under the lens.

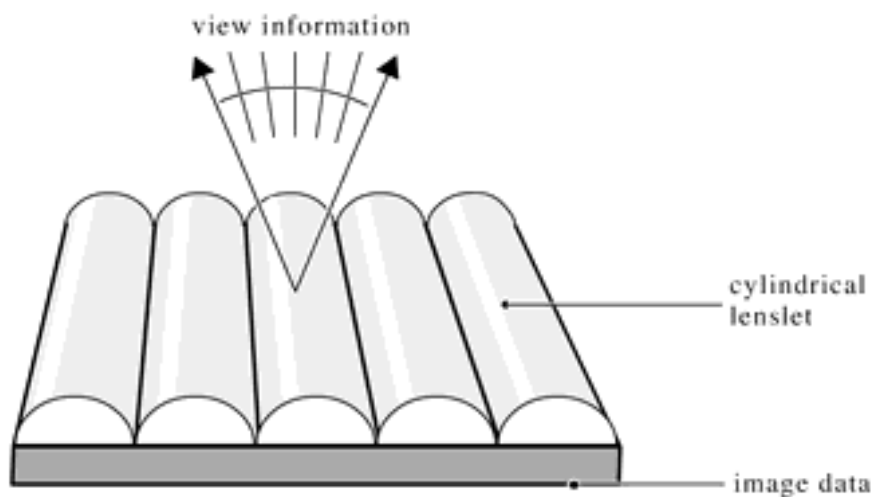
A.A. 2023-2024

58/86

<http://borghese.di.unimi.it/>



Display Autostereoscopici



A.A. 2023-2024

59/86

<http://borghese.di.unimi.it/>



Output devices (eye-glasses)



Semi-immersive: Eye-glasses (video accuracy, but user is not allowed to move, lateral vision is permitted, which limits virtual realism).



Images are generated multiplexed in time for the two eyes.
Quad-buffering is used (a pair of double buffers).

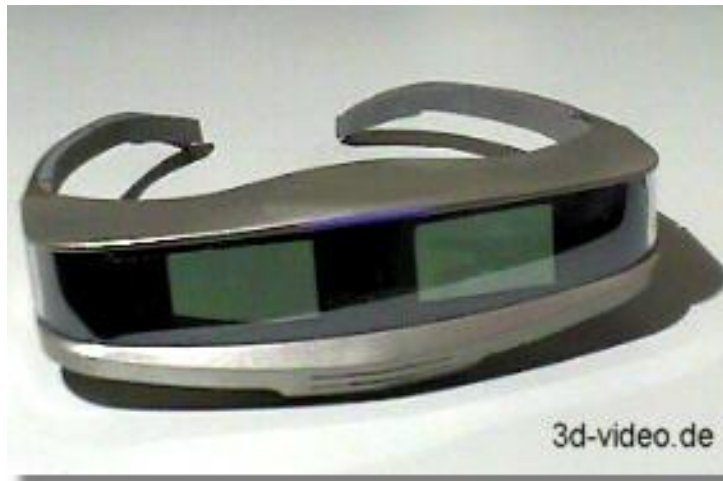
A.A. 2023-2024

60/86

<http://borghese.di.unimi.it/>



I-glasses (games)



A.A. 2023-2024

61/86

<http://borghese.di.unimi.it/>



HMD (n-vision)



Up to 1280 x 1024, 180Hz.
Time multiplexing.

A.A. 2023-2024

62/86

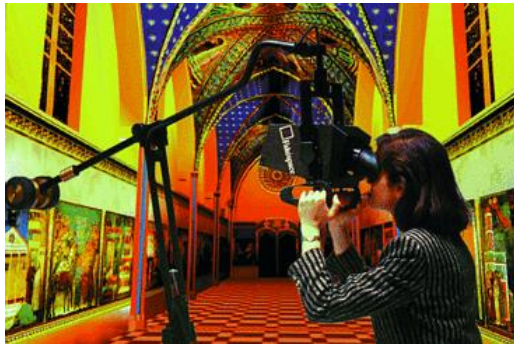
<http://borghese.di.unimi.it/>



Output devices (BOOM HMD)



Up to 1280 x 1024 pixels / eye
CRT Technology
Head tracking is integrated.



A.A. 2023-2024

63/86

<http://borghese.di.unimi.it/>



CAVE



Room 2.5m x 2.5m
with Virtual images
(stereoscopic) projected
onto its walls.

More people and
Complete immersivity.



A.A. 2023-2024

64/86

<http://borghese.di.unimi.it/>



Oculus Rift novel HMD: a new hype



Stereo
Motion
Face
Gaze



Experience in the lab
Thesis available

<http://www.oculusvr.com/>

A.A. 2023-2024

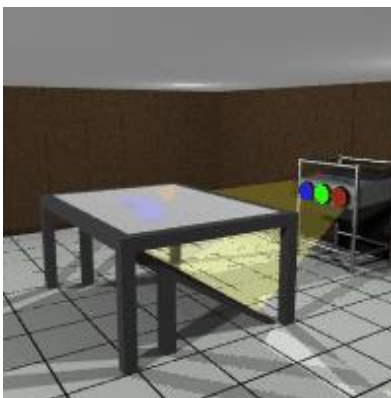
65/86

<http://borghese.di.unimi.it/>



Responsive work-bench (Strauss et al., 1995)

Virtual 3D objects are positioned on a working table. They are created projecting the stereo images over the table surface.



A.A. 2023-2024

66/86

<http://borghese.di.unimi.it/>



Large screen displays (with or without stereo – see Graphics Lab in Celoria)



Workwall



A.A. 2023-2024

<http://lborghese.di.unimi.it/>



Content



- Introduction
- Input Systems
- Graphical Engine
- World Generators
- Output Systems
- **Applications**

A.A. 2023-2024

68/86

<http://lborghese.di.unimi.it/>



Applications



- Army
- Medicine
- Industry (inspection, virtual prototyping)
- Chemistry and Physics
- Virtual theaters and theme parks
- Entertainment
- Communication
- Engineering, Ergonomics and Architecture (Visual computing).
- History.



Nefertari





Virtual mannequin



Amazon virtual dressing room: <https://www.youtube.com/watch?v=X3ghb6atM2o>

A.A. 2023-2024

71/86

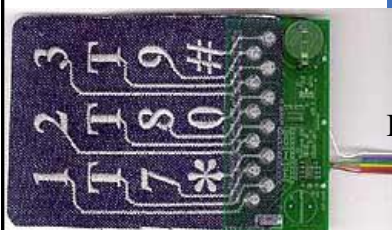
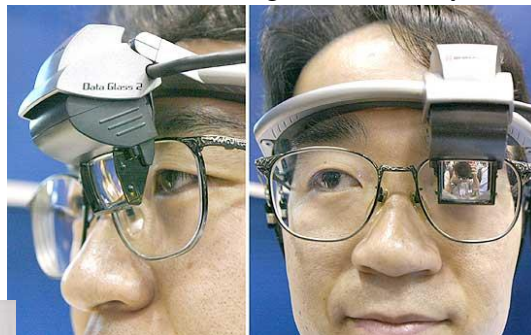
<http://borghese.di.unimi.it/>



Wearable devices – input / output



Characteristics: mobile, context sensitive, augmented reality.



Interface on cloth

72/86

<http://borghese.di.unimi.it/>



Design: virtual industrial plans



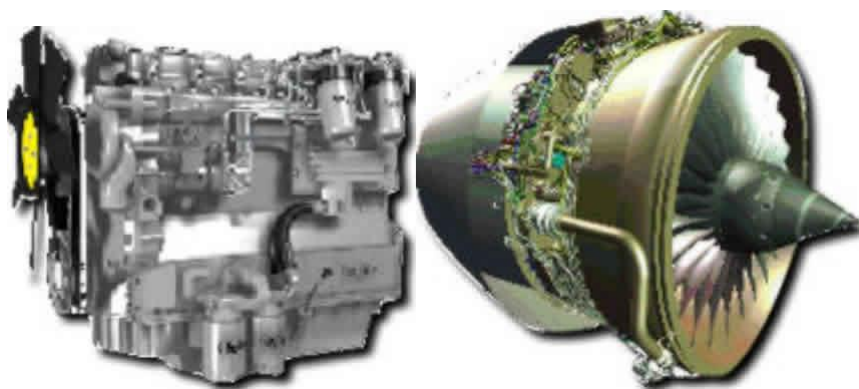
A.A. 2023-2024

73/86

<http://borghese.di.unimi.it/>



Design: virtual engines



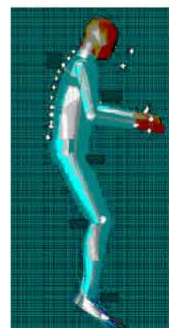
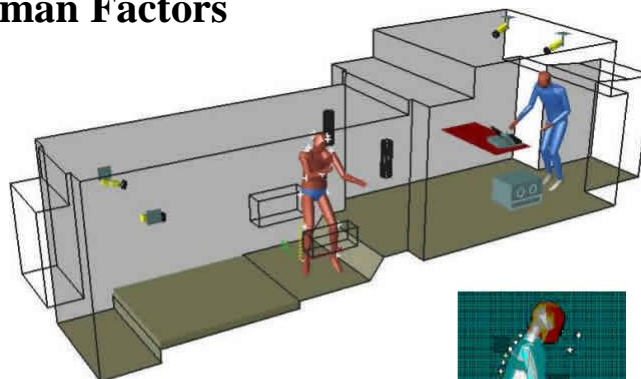
A.A. 2023-2024

74/86

<http://borghese.di.unimi.it/>



Human Factors



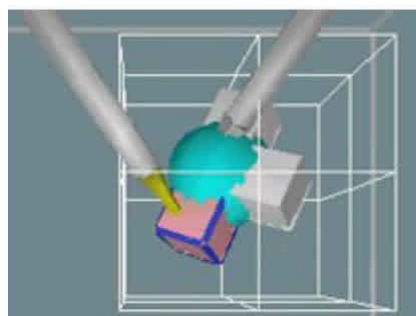
A.A. 2023-2024

75/86

<http://borghese.di.unimi.it/>



Assisted surgery



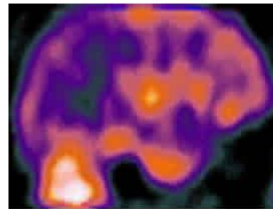
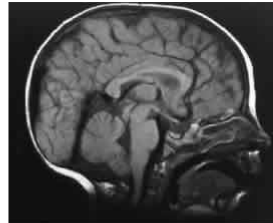
A.A. 2023-2024

76/86

<http://borghese.di.unimi.it/>



Surgery planning through imaging



A.A. 2023-2024

77/86

<http://borghese.di.unimi.it/>



Imaging and 3D printing



Acrylic mandible realized with CAD-CAM technology from CAT images

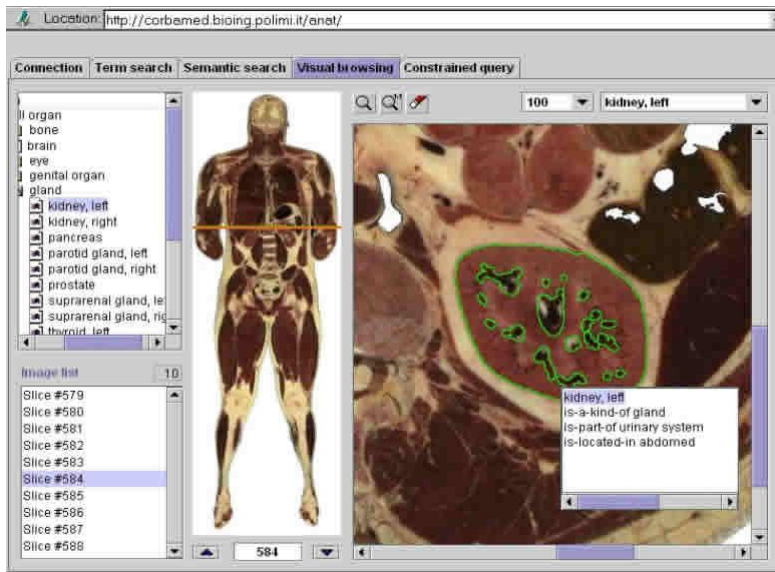
A.A. 2023-2024

78/86

<http://borghese.di.unimi.it/>



Virtual anatomy



A.A. 2023-2024

79/86

<http://borghese.di.unimi.it/>



Augmented Reality – Camera movement from video



Applications for smart phone (Vuforia)

A.A. 2023-2024

80/86

<http://borghese.di.unimi.it/>



Augmented Reality through Hololens



A new vision for computing, built on a history of innovation

<https://www.microsoft.com/da-DK/hololens>

Experience in the lab



Clinical Motion Analysis

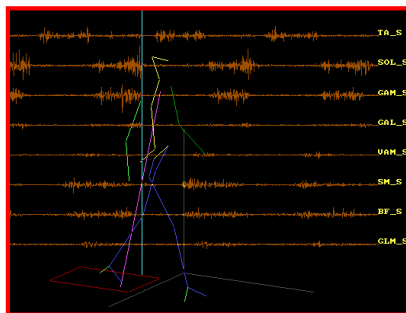


MOTION ANALYSER

FORCE TRANSDUCER

MATHEMATICAL MODELS

EMG



JOINT KINEMATICS

JOINT KINETICS

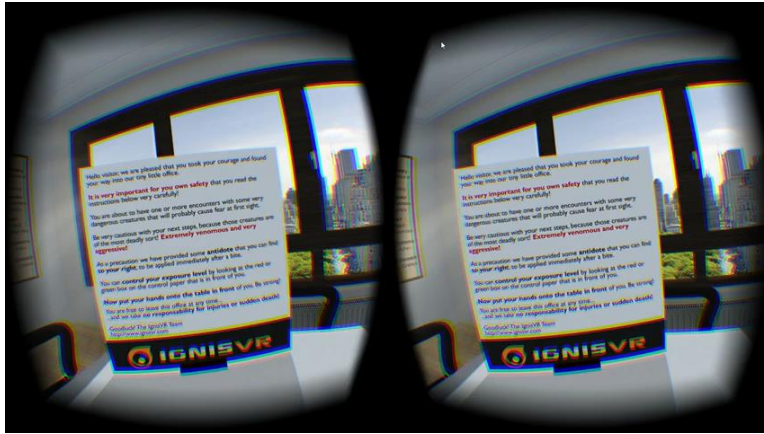
EXTERNAL FORCES

PLANTAR PRESSION

MUSCLE ACTIVATION AND FORCE



Treatment of phobias

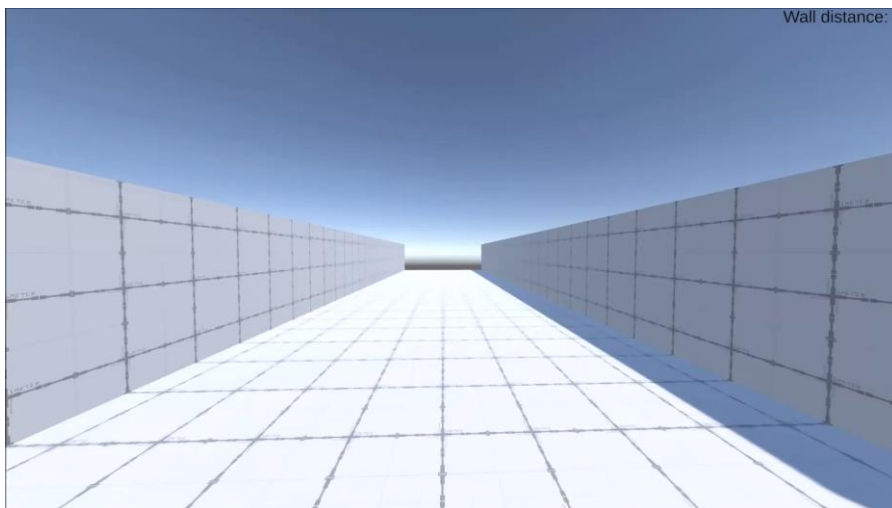


<https://store.steampowered.com/app/485270/Arachnophobia/?l=italian>

Aracnophobia, claustrophobia, agorophobia ...



Parkinson & Freezing





Virtual Tosca



Content



- Introduction
- Input Systems
- World Generators
- Virtual Reality Engine
- Output Systems
- Conclusions